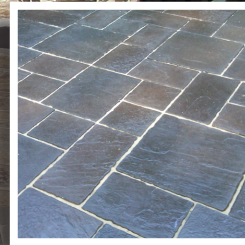




Global Sealer
Technologies

Lock 'N Seal



*Sealer and Joint Stabilizer for Segmental
Pavement Systems*



Lock 'N Seal is a one step water based, UV resistant sealer and joint sand stabilizer designed specifically for interlocking paving stone installations.

- Bonds and locks down joint sand
- Retards efflorescence
- Prevents ant tunneling
- Repels oil, grease and rust stains
- Inhibits weeds and grass between pavers
- Non- yellowing and UV resistant
- Easily applied, fast drying and long lasting
- Interior and exterior use, re-coatable
- Eases maintenance
- 25-35% color densification

www.gstinternational.com



Lock 'N Seal

Sealer and Joint Stabilizer for Segmental Pavement Systems

Overview

DESCRIPTION:

Lock 'N Seal is a one-step sealer and joint sand stabilizer. It is formulated from the latest developments in non-hazardous VOC, EPA and OSHA compliant, solvent free, water-based UV resistant acrylic chemistry designed specifically with high product solids to create the ultimate sealer for interlocking paver installations. It seals and locks down the sand within the paving joints with a flexible bond that reduces weed growth and ant mines.

Lock 'N Seal gives superior protection against stains and has exceptional water resistance. It will resist most stains up to 24 hours, however, oils and especially solvents should be wiped up soon after spillage has occurred. **Lock 'N Seal** enhances, brightens and beautifies the natural beauty and color of the pavers while improving their durability and resistance to fading. Once the surface has been properly prepped, cleaned and dried (24-48 hours), **Lock 'N Seal** can be applied immediately.

LIMITATIONS:

Not recommended for ceramic tile, marble, granite, porcelain and terrazzo. Do not use where hydrostatic pressure is possible. **Lock 'N Seal should NOT be used in conjunction with polymeric sand.** Please choose one of our other fine sealers.

USE FOR:

- Segmental Pavement Systems
- Unglazed Ceramic Tiles - Saltillo
- Clay Brick and Natural Stone
- Commercial applications such as: parking lots and ports

FEATURES:

- Bonds and locks down joint sand
- Retards efflorescence
- Prevents ant tunneling
- Repels oil, grease and rust stains
- Inhibits weeds and grass between pavers
- Non- yellowing and UV resistant
- Easily applied, fast drying and long lasting
- Interior and exterior use
- Eases maintenance
- Re-coatable
- 25-35% color densification

Specifications:

VOC: 18 g/l

FLASH POINT: >240°F (115°C)

WEIGHT PER GALLON: 8.5 lbs.

APPEARANCE: Milky but clear when dry

ODOR: Mild acrylic

PACKAGE VISCOSITY: 27 sec. Zahn Cup #2

SOLIDS by VOLUME: 26%

COVERAGE:

Porous Surfaces: 75 - 150 sq.ft./gal
(flagstone, Mexican clay tile, paver brick, etc.)

Dense Surfaces: 150 - 250 sq.ft./gal
(slate, stone, limestone, etc.)

For exact coverage rates, a measured quantity to proper saturation over a known area will provide a square foot coverage rate for a specific job.

DRY SCHEDULE: (at 50% RH and one mil DFT)

Dry Time: 30 mins to 3 hrs

Rainproof: 24 hrs

Cure Time: 4-7 days

GST PRODUCT CODE: GST 502

SHIPPING DESCRIPTION:

Ground/Air/Vessel: Not regulated

Required Label: Not required

Required Marking: Not required

UNIFORM FIRE CODE: Non combustible

STORAGE TEMPERATURE: 35°F - 120°F

KEEP FROM FREEZING

SHELF LIFE: Warranted one year

HMIS RATINGS: H - 1; F - 1; R - 0; PP - H

CLEAN UP: Water

REMOVE: Chemical stripper

Available in one gallon and five gallon sizes. 55 gallon drums and 275 gallon totes are also available upon request.

NOTE: Meets or exceeds Federal EPA standards for VOC compliance.

Meets or exceeds South Coast Air Quality Management District and the Bay Area Air Quality Management District, for VOC compliance of less than 100g/l required by the State of California.

MANUFACTURED IN THE USA



IMPORTANT NOTE:

Before use on a job, thoroughly test this product on a small area to assure performance and appearance. Use only in well ventilated areas. Immediately remove pools or puddles where over application has occurred.

SURFACE PREPARATION:

Cleaning your hardscape project with a pressure washer and/or a surface cleaner is the first step in preparing for a successful project. It is strongly recommended to utilize a heated pressure washer to aid in the cleaning process. A heated pressure washer in conjunction with **Pro Grade Cleaner** will remove most organic stains, weeds, and old polymeric sand in considerably less time than it would take with a cold water unit. A heated pressure washer will also aid in the removal of residual sealer and decrease the labor when 'stripping' old sealer off.

Stringent cleaners such as muriatic acid can be very harmful to your pavement, causing irreversible damage to the surface. Most colorants for concrete are made from iron oxide (FeO₂) or better known as rust. Strong acids like muriatic acid will dissolve these pigments permanently changing the appearance and etching the surface.

Allow product to dry thoroughly before applying a sealer.

APPLICATION:

Lock 'N Seal should NOT be used in conjunction with polymeric sand as it is also a joint sand stabilizer, not made to activate polymeric sand.

GST's Lock 'N Seal is applied with a **GST Low Volume Pump Sprayer**. Applying sealer on perimeter edges with a roller is acceptable to eliminate overspray on vegetation and surrounding structures. Using the **GST Low Volume Pump Sprayer**, add sealer up to the top of the GST Logo printed on the sprayer. Pump the sprayer approximately 30 times to pressurize the tank. Hold the spray wand 8"-10" from the surface and begin to apply the sealer using an overlapping circular motion. To maintain a consistent even flow of sealer, it will be necessary to continually pump up the sprayer as the pressure in the tank decreases.

A heavy coat needs to be applied. Once the sealer has pooled on the surface, the excess should be squeegeed or broomed into the joint immediately. Sealer in the joint should appear milky white for 45 seconds to a minute, allowing for saturation of the sealer into the sand before disappearing. This will ensure proper sand stabilization. *(Not designed for products with more than 3/8" joints.)* For textured or profiled surfaces, a soft bristle broom is

recommended to move the excess sealer into the joints.

Do not apply **Lock 'N Seal** during inclement weather or in direct sunlight when temperatures exceed 80°F. Application to a damp surface or uncured concrete (28 day minimum) may cause a hazy appearance or loss of adhesion. Air and surface temperature should be between 50°F and 80°F for 24 hours following application.

On segmental pavement systems, application of any sealer with a roller is not recommended except for the perimeter, as it will pull sand from the joint and will deposit it on the surface causing an undesirable result.

WATER PENETRATION TEST:

Drop a small amount of water on the sealed surface. If water penetration occurs or if water does not bead up on the surface, the application of additional sealer is required.

KEEP OUT OF THE REACH OF CHILDREN

CONTAINS: Diethanolamine CAS #111-32-2: Nonylphenol Polyethylene glycol ether CAS #5131-66-8: formaldehyde CAS #50-00-0



WARNING



IF INHALED: May cause respiratory tract irritation. Move to fresh air.

IF ON SKIN: Can cause skin irritation and dryness with prolonged skin contact. Wash with soap and water.

IF INGESTED: May cause gastrointestinal irritation with nausea, vomiting and diarrhea. Do not induce vomiting. Drink a large quantity of water and seek medical care.

IF IN EYES: Causes eye irritation. Immediately flush with plenty of water for at least 15 minutes. After initial flushing, remove any contact lenses and continue for at least 15 minutes.

Store locked up. Dispose of contents/container according to local/regional/national/international regulations.

Refer to SDS at www.gstinternational.com for complete safety information.

This product is made from the finest raw materials available and manufactured to proven formulation under strict quality control for its intended use. However, results obtained with the use of this product under a variety of conditions may depend on circumstances beyond our control. GST International, Inc. and the seller therefore disclaim any responsibility for damage of any kind. The only warranty extended, expressed or implied, is for defective material.

PRODUCT WARRANTY: The statements made herein, on labels, product bulletins, or by any of GST International employees or agents concerning this product are given for general information only. Due to variables beyond GST International's control in application, surface preparation, surface temperature, humidity and other variable factors GST International assumes no liability for any claim that may arise out of the use of its products and disclaims any warranty expressed or implied relating to the storage, application, thinning, merchantability, Buyer's assumption of performance, and the fitness for a particular purpose. Receipt of products from GST International or its agents constitutes acceptance of the terms of this warranty. In the event that GST International finds that the product delivered is not of GST International's standard quality, GST International will at its sole discretion, either replace the product or refund the purchase price. GST International's choice of one of these remedies shall be the Buyer's sole remedy. GST International will under no circumstances be liable for consequential damages, except insofar as liability is mandated by law. GST International will deliver products at agreed times insofar as it is reasonably able to do so, but it will not be liable for failure to deliver on time when the failure is beyond its reasonable control.



Global Sealer Technologies



PREP & CLEAN



Our Family of Products:

Where Efflorescence, Rust or Cement Scale is Present.

Use **Clean Concrete** to remove efflorescence, rust and cement staining.

Where Cleaning is Needed or Efflorescence Remover Has Been Used.

Use **Pro-Grade Cleaner** to thoroughly clean, remove oil, grease, dirt and prepare the surface prior to applying any of the GST Sealers.

Use **ProGrade Cleaner** to neutralize pH where **Clean Concrete** was used.

Where a Heavy Duty Concrete and Masonry Degreaser is Required.

Degreaser Pro is a concentrated heavy duty concrete and masonry degreaser specifically designed to remove deep seated oil and grease stains, chewing gum residue and organic stains on all hardscape surfaces.

SEAL & PROTECT



Choose an Invisible or Appearance Enhancing Sealer

To be applied after the surface is clean and dry.

Choose an Appearance Enhancing Sealer:

- Low Sheen Wet Look Lacquer
- High Gloss Wet Look Lacquer
- Lock 'N Seal
- Satin Seal
- Final Coat

Invisible Sealer:

- Stain Block Elite

Product Characteristics:

Use with:

Product Guide

Product Guide	High Gloss		Low Sheen		Satin	Invisible	Light Enhancement		Heavy Enhancement		Repels Water		Repels Grease and Oil		Resists Stains		Resists Efflorescence		Removes Spalling		Removes Oil, Grime		Removes Rust, Efflorescence		Indoor applications		Outdoor applications		Porous Surfaces		Dense Surfaces		Concrete, Exposed Aggregate		Pavers and Slabs		Concrete Block Walls		Brick Masonry		Natural Stone & Travertine		Manufactured Stone		Synthetic Floors		Tiles																																																																																																																																																																																																																																																																																																																																																																																																																																																																																																																																																																																																																																																																																																																																																																																																																																																																																																																																																																																																																																																																																																																																								
	✓	✓	✓	✓			✓	✓	✓	✓	✓	✓	✓	✓	✓	✓	✓	✓	✓	✓	✓	✓	✓	✓	✓	✓	✓	✓	✓	✓	✓	✓	✓	✓	✓	✓	✓	✓	✓	✓	✓	✓	✓	✓	✓	✓	✓	✓	✓	✓	✓	✓	✓	✓	✓	✓	✓	✓	✓	✓	✓	✓	✓	✓	✓	✓	✓	✓	✓	✓	✓	✓	✓	✓	✓	✓	✓	✓	✓	✓	✓	✓	✓	✓	✓	✓	✓	✓	✓	✓	✓	✓	✓	✓	✓	✓	✓	✓	✓	✓	✓	✓	✓	✓	✓	✓	✓	✓	✓	✓	✓	✓	✓	✓	✓	✓	✓	✓	✓	✓	✓	✓	✓	✓	✓	✓	✓	✓	✓	✓	✓	✓	✓	✓	✓	✓	✓	✓	✓	✓	✓	✓	✓	✓	✓	✓	✓	✓	✓	✓	✓	✓	✓	✓	✓	✓	✓	✓	✓	✓	✓	✓	✓	✓	✓	✓	✓	✓	✓	✓	✓	✓	✓	✓	✓	✓	✓	✓	✓	✓	✓	✓	✓	✓	✓	✓	✓	✓	✓	✓	✓	✓	✓	✓	✓	✓	✓	✓	✓	✓	✓	✓	✓	✓	✓	✓	✓	✓	✓	✓	✓	✓	✓	✓	✓	✓	✓	✓	✓	✓	✓	✓	✓	✓	✓	✓	✓	✓	✓	✓	✓	✓	✓	✓	✓	✓	✓	✓	✓	✓	✓	✓	✓	✓	✓	✓	✓	✓	✓	✓	✓	✓	✓	✓	✓	✓	✓	✓	✓	✓	✓	✓	✓	✓	✓	✓	✓	✓	✓	✓	✓	✓	✓	✓	✓	✓	✓	✓	✓	✓	✓	✓	✓	✓	✓	✓	✓	✓	✓	✓	✓	✓	✓	✓	✓	✓	✓	✓	✓	✓	✓	✓	✓	✓	✓	✓	✓	✓	✓	✓	✓	✓	✓	✓	✓	✓	✓	✓	✓	✓	✓	✓	✓	✓	✓	✓	✓	✓	✓	✓	✓	✓	✓	✓	✓	✓	✓	✓	✓	✓	✓	✓	✓	✓	✓	✓	✓	✓	✓	✓	✓	✓	✓	✓	✓	✓	✓	✓	✓	✓	✓	✓	✓	✓	✓	✓	✓	✓	✓	✓	✓	✓	✓	✓	✓	✓	✓	✓	✓	✓	✓	✓	✓	✓	✓	✓	✓	✓	✓	✓	✓	✓	✓	✓	✓	✓	✓	✓	✓	✓	✓	✓	✓	✓	✓	✓	✓	✓	✓	✓	✓	✓	✓	✓	✓	✓	✓	✓	✓	✓	✓	✓	✓	✓	✓	✓	✓	✓	✓	✓	✓	✓	✓	✓	✓	✓	✓	✓	✓	✓	✓	✓	✓	✓	✓	✓	✓	✓	✓	✓	✓	✓	✓	✓	✓	✓	✓	✓	✓	✓	✓	✓	✓	✓	✓	✓	✓	✓	✓	✓	✓	✓	✓	✓	✓	✓	✓	✓	✓	✓	✓	✓	✓	✓	✓	✓	✓	✓	✓	✓	✓	✓	✓	✓	✓	✓	✓	✓	✓	✓	✓	✓	✓	✓	✓	✓	✓	✓	✓	✓	✓	✓	✓	✓	✓	✓	✓	✓	✓	✓	✓	✓	✓	✓	✓	✓	✓	✓	✓	✓	✓	✓	✓	✓	✓	✓	✓	✓	✓	✓	✓	✓	✓	✓	✓	✓	✓	✓	✓	✓	✓	✓	✓	✓	✓	✓	✓	✓	✓	✓	✓	✓	✓	✓	✓	✓	✓	✓	✓	✓	✓	✓	✓	✓	✓	✓	✓	✓	✓	✓	✓	✓	✓	✓	✓	✓	✓	✓	✓	✓	✓	✓	✓	✓	✓	✓	✓	✓	✓	✓	✓	✓	✓	✓	✓	✓	✓	✓	✓	✓	✓	✓	✓	✓	✓	✓	✓	✓	✓	✓	✓	✓	✓	✓	✓	✓	✓	✓	✓	✓	✓	✓	✓	✓	✓	✓	✓	✓	✓	✓	✓	✓	✓	✓	✓	✓	✓	✓	✓	✓	✓	✓	✓	✓	✓	✓	✓	✓	✓	✓	✓	✓	✓	✓	✓	✓	✓	✓	✓	✓	✓	✓	✓	✓	✓	✓	✓	✓	✓	✓	✓	✓	✓	✓	✓	✓	✓	✓	✓	✓	✓	✓	✓	✓	✓	✓	✓	✓	✓	✓	✓	✓	✓	✓	✓	✓	✓	✓	✓	✓	✓	✓	✓	✓	✓	✓	✓	✓	✓	✓	✓	✓	✓	✓	✓	✓	✓	✓	✓	✓	✓	✓	✓	✓	✓	✓	✓	✓	✓	✓	✓	✓	✓	✓	✓	✓	✓	✓	✓	✓	✓	✓	✓	✓	✓	✓	✓	✓	✓	✓	✓	✓	✓	✓	✓	✓	✓	✓	✓	✓	✓	✓	✓	✓	✓	✓	✓	✓	✓	✓	✓	✓	✓	✓	✓	✓	✓	✓	✓	✓	✓	✓	✓	✓	✓	✓	✓	✓	✓	✓	✓	✓	✓	✓	✓	✓	✓	✓	✓	✓	✓	✓	✓	✓	✓	✓	✓	✓	✓	✓	✓	✓	✓	✓	✓	✓	✓	✓	✓	✓	✓	✓	✓	✓	✓	✓	✓	✓	✓	✓	✓	✓	✓	✓	✓	✓	✓	✓	✓	✓	✓	✓	✓	✓	✓	✓	✓	✓	✓	✓	✓	✓	✓	✓	✓	✓	✓	✓	✓	✓	✓	✓	✓	✓	✓	✓	✓	✓	✓	✓	✓	✓	✓	✓	✓	✓	✓	✓	✓	✓	✓	✓	✓	✓	✓	✓	✓	✓	✓	✓	✓	✓	✓	✓	✓	✓	✓	✓	✓	✓	✓	✓	✓	✓	✓	✓	✓	✓	✓	✓	✓	✓	✓	✓	✓	✓	✓	✓	✓	✓	✓	✓	✓	✓	✓	✓	✓	✓	✓	✓	✓	✓	✓	✓	✓	✓	✓	✓	✓	✓	✓	✓	✓	✓	✓	✓	✓	✓	✓	✓	✓	✓	✓	✓	✓	✓	✓	✓	✓	✓	✓	✓	✓	✓	✓	✓	✓	✓	✓	✓	✓	✓	✓	✓	✓	✓	✓	✓	✓	✓	✓	✓	✓	✓	✓	✓	✓	✓	✓	✓	✓	✓	✓	✓	✓	✓	✓	✓	✓	✓	✓	✓	✓	✓	✓	✓	✓	✓	✓	✓	✓	✓	✓	✓	✓	✓	✓	✓	✓	✓	✓	✓	✓	✓	✓	✓	✓	✓	✓	✓	✓	✓	✓	✓	✓	✓	✓	✓	✓	✓	✓	✓	✓	✓	✓	✓	✓	✓	✓	✓	✓	✓	✓	✓	✓	✓	✓	✓	✓	✓	✓	✓	✓	✓	✓	✓	✓	✓	✓	✓	✓	✓	✓	✓	✓	✓	✓	✓	✓	✓	✓	✓	✓	✓	✓	✓	✓	✓	✓	✓	✓	✓	✓	✓	✓	✓	✓	✓	✓	✓	✓	✓	✓	✓	✓	✓	✓	✓	✓	✓	✓	✓	✓	✓	✓	✓	✓	✓	✓	✓	✓	✓	✓	✓	✓	✓	✓	✓	✓	✓	✓	✓	✓

All products are available in standard one gallon and five gallon sizes. 55 gallon drums and 275 gallon totes are also available upon request.

Product Information Chart