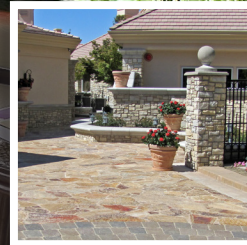
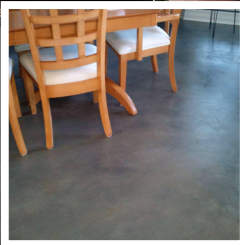
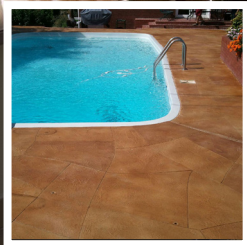




Global Sealer
Technologies

Satin Seal



*Water-Based
Stain Resistant Acrylic Sealer*



Satin Seal is a state-of-the-art water based acrylic sealer with a satin sheen finish designed to enhance the natural colors of the applied surface.

- Inhibits efflorescence
- Water-based solvent free and low odor
- Interior and exterior use
- Oil and stain resistant
- Excellent adhesion
- Water repellent
- Non yellowing and UV resistant
- Easily applied, fast drying and long lasting
- Re-coatable
- 20-25% color densification

www.gstinternational.com



Satin Seal

Water-Based Stain Resistant Acrylic Sealer

Overview

DESCRIPTION:

Satin Seal is formulated from current state-of-the-art water-based ultra violet resistant acrylic coatings technology. Designed as a film forming acrylic sealer, **Satin Seal** creates a non-yellowing barrier coating that seals and protects concrete, exposed aggregate, natural stone, slate, stamped and colored concrete against food stains, grease, oils, rust and water, while enhancing the natural colors of the applied surface whether indoors or out.

When used on surfaces like concrete pavers, **Satin Seal** penetrates deeply, providing long-term protective service. For all unsealed surfaces, it makes a perfect base coat prior to the application of **GST Final Coat**, buffable floor polish and wear coat. **Satin Seal** will resist most stains for 24 hours, however, oils and especially solvents should be wiped up soon after spillage has occurred.

LIMITATIONS:

Not recommended for non GST product pre-sealed surfaces or non-porous surfaces such as ceramic tile, marble, granite, porcelain and terrazzo. Do not use where hydrostatic pressure is possible.

USE ON:

- Standard concrete
- Colored and stamped concrete
- Exposed aggregate concrete
- Interlocking concrete pavers
- Mexican Saltillo tile
- Manufactured stone
- Masonry brick
- Natural stone
- Slate

FEATURES:

- Inhibits efflorescence
- Water-based solvent free and low odor
- Interior and exterior use
- Oil and stain resistant
- Excellent adhesion
- Water repellent
- Non yellowing and UV resistant
- Easily applied, fast drying and long lasting
- Re-coatable
- 20-25% color densification

Specifications:

VOC: 14 g/l

WEIGHT PER GALLON: 8.4 lbs.

FLASH POINT: >240°F (115°C)

APPEARANCE: Milky

ODOR: Mild acrylic

PACKAGE VISCOSITY: 19 sec. Zahn Cup #2

SOLIDS:

By Weight 17%

By Volume 18%

COVERAGE:

Porous Surface 100 – 250 sq.ft./gal

Dense Concrete 250 – 500 sq.ft./gal

For exact coverage rates, a measured quantity to proper saturation over a known area will provide a square foot coverage rate for a specific job.

DRY SCHEDULE: (at 50% RH and one mil DFT)

Dry Time: 30 mins to 3 hrs

Rainproof: 24 hrs

Cure Time: 4-7 days

GST PRODUCT CODE: GST 503

SHIPPING DESCRIPTION:

Ground/Air/Vessel: Not Regulated

Required Label: Not Required

Required Marking: Not Required

UNIFORM FIRE CODE: (CFR 29) Non combustible

STORAGE TEMPERATURE: 35° F. - 120° F.

KEEP THIS PRODUCT FROM FREEZING

SHELF LIFE: Warranted One Year

HMIS RATINGS: H - 1; F - 1; R - 0; PP - H

CLEAN UP:

When wet Flush with clean water.

To remove: Abrasive blasting or chemical stripper.

Available in one gallon and five gallon sizes. 55 gallon drums and 275 gallon totes are also available upon request.

NOTE: Meets or exceeds Federal EPA standards for VOC compliance. Meets or exceeds South Coast Air Quality Management District and the Bay Area Air Quality Management District, for VOC compliance of less than 100g/l required by the State of California.

MANUFACTURED IN THE USA



IMPORTANT NOTE:

Before use on a job, thoroughly test this product on a sample to assure performance and appearance. Use only in well ventilated areas. Immediately remove pools or puddles were over application has occurred.

SURFACE PREPARATION:

Cleaning your hardscape project with a pressure washer and/or a surface cleaner is the first step in preparing for a successful project. It is strongly recommended to utilize a heated pressure washer to aid in the cleaning process. A heated pressure washer in conjunction with **Pro Grade Cleaner** will remove most organic stains, weeds, and old polymeric sand in considerably less time than it would take with a cold water unit. A heated pressure washer will also aid in the removal of residual sealer and decrease the labor when 'stripping' old sealer off.

Stringent cleaners such as muriatic acid can be very harmful to your pavement, causing irreversible damage to the surface. Most colorants for concrete are made from iron oxide (FeO₂) or better known as rust. Strong acids like muriatic acid will dissolve these pigments permanently changing the appearance and etching the surface.

Allow product to dry thoroughly before applying a sealer.

THINNING: Not required, use as is.

APPLICATION:

GST's Satin Seal is applied with our **Low Volume Pump Sprayer**. Applying sealer on perimeter edges with a roller is acceptable to eliminate overspray on vegetation and surrounding structures. Using the **GST Low Volume Pump Sprayer**, add sealer up to the top of the GST Logo printed on the sprayer. Pump the sprayer approximately 30 times to pressurize the tank. Hold the spray wand 8"-10" from the surface and begin to apply the sealer using an overlapping circular motion to ensure an even application. To maintain a consistent even flow of sealer, it will be necessary to continually pump up the sprayer as the pressure in the tank decreases.

Upon initial application, the surface will appear 'wet-damp'. When dry, there should be a 20-25% color enhancement with a light to medium satin finish.

If you over-apply the sealer and create puddles, it will be necessary to stop spraying and disperse additional sealer on the surface with a blower. One coat will seal and protect the surface. A second coat may be necessary on highly porous surfaces. GST sprayers are made with chemically resistant tips and seals.

After use, simply run approximately 1 quart of **Pro Grade Cleaner** diluted 5:1 with water through the sprayer. This will ensure your sprayer will function properly for future use. Replacement tips are available.

Do not apply **Satin Seal** during inclement weather or in direct sunlight when temperatures exceed 80°F. Application to a damp surface or uncured concrete (28 day minimum) may cause a hazy appearance or loss of adhesion. Air and surface temperature should be between 50°F and 80°F for 24 hours following application.

WATER PENETRATION TEST:

Drop a small amount of water on the sealed surface. If water penetration occurs or if water does not bead up on the surface, the application of additional sealer is required.

KEEP OUT OF THE REACH OF CHILDREN

CONTAINS: Diethanolamine, CAS# 111-42-2; Nonylphenyl Polyethylene Glycol Ether, CAS# 12087-87-0; Aliphatic Propylene Glycol Ethers, CAS # 5131-66-8; Formaldehyde CAS# 50-00-0.



WARNING



IF INHALED: May cause respiratory tract irritation. Remove victim to fresh air and keep at rest in a position comfortable for breathing.

IF ON SKIN: Can cause skin irritation and dryness with prolonged skin contact. Wash with plenty of soap and water.

IF INGESTED: May cause gastrointestinal irritation with nausea, vomiting and diarrhea. Call a Poison Center or doctor if you feel unwell.

IF IN EYES: Causes eye irritation. Rinse cautiously with water for several minutes. Remove contact lenses, if present and easy to do. Continue rinsing.

STORAGE AND DISPOSAL: Dispose of contents/container according to local, city, state, and federal regulations.

Refer to SDS at www.gstinternational.com for complete safety information.

This product is made from the finest raw materials available and manufactured under strict quality control for its intended use. However, results obtained with the use of this product under a variety of conditions may depend on circumstances beyond our control.

GST International, Inc. (including the seller thereof) warrants only that its products will be free from defects in materials. GST International, Inc.'s (including the seller thereof) sole obligation, and the purchaser's (including the person using or benefiting from its use) sole and exclusive remedy in the event of a defect covered by the foregoing warranty, shall be, at GST International, Inc.'s discretion, to (a) replace the defective product, or (b) refund to the purchaser the purchase price paid for such defective product. There are no warranties other than the limited express warranty provided above. In no event shall GST International, Inc. (or the seller of its products) be liable for incidental or consequential damages resulting or arising from the use of its products.



Global Sealer Technologies



PREP & CLEAN



Our Family of Products:

Where Efflorescence, Rust or Cement Scale is Present.

Use **Clean Concrete** to remove efflorescence, rust and cement staining.

Where Cleaning is Needed or Efflorescence Remover Has Been Used.

Use **Pro-Grade Cleaner** to thoroughly clean, remove oil, grease, dirt and prepare the surface prior to applying any of the GST Sealers.

Use **ProGrade Cleaner** to neutralize pH where **Clean Concrete** was used.

Where a Heavy Duty Concrete and Masonry Degreaser is Required.

Degreaser Pro is a concentrated heavy duty concrete and masonry degreaser specifically designed to remove deep seated oil and grease stains, chewing gum residue and organic stains on all hardscape surfaces.

SEAL & PROTECT



Choose an Invisible or Appearance Enhancing Sealer

To be applied after the surface is clean and dry.

Choose an Appearance Enhancing Sealer:

- Low Sheen Wet Look Lacquer
- High Gloss Wet Look Lacquer
- Lock 'N Seal
- Satin Seal
- Final Coat

Invisible Sealer:

- Stain Block Elite

Product Characteristics:

Use with:

Product Guide

Product Guide	High Gloss	Low Sheen	Satin	Invisible	Light Enhancement	Heavy Enhancement	Repels Water	Repels Grease and Oil	Resists Stains	Resists Efflorescence	Removes Spalling	Removes Oil, Grime	Removes Rust, Efflorescence	Indoor applications	Outdoor applications	Porous Surfaces	Dense Surfaces	Concrete	Exposed Aggregate	Pavers and Slabs	Concrete Block Walls	Brick Masonry	Natural Stone & Travertine	Manufactured Stone	Synthetic Floors	Tiles
High Gloss Wet Look	✔					✔	✔	✔	✔	✔	✔				✔	✔	✔	✔	✔		✔	✔				
Low Sheen Wet Look		✔	✔			✔	✔	✔	✔	✔	✔				✔	✔	✔	✔	✔		✔	✔				
Lock n Seal			✔		✔		✔	✔	✔	✔	✔				✔	✔	✔	✔	✔	✔	✔	✔				
Satin Seal			✔		✔		✔	✔	✔	✔	✔				✔	✔	✔	✔	✔	✔	✔	✔	✔			
Final Coat	✔				✔										✔		✔	✔				✔		✔	✔	
Stain Block Elite				✔			✔	✔	✔	✔	✔				✔	✔	✔	✔	✔	✔	✔	✔	✔			
Pro-Grade Cleaner											✔				✔	✔	✔	✔	✔	✔	✔	✔	✔			
Clean Concrete												✔				✔	✔	✔	✔	✔	✔	✔	✔			
DeGreaser Pro											✔				✔	✔	✔	✔	✔	✔	✔	✔	✔			✔

All products are available in standard one gallon and five gallon sizes. 55 gallon drums and 275 gallon totes are also available upon request.

Product Information Chart